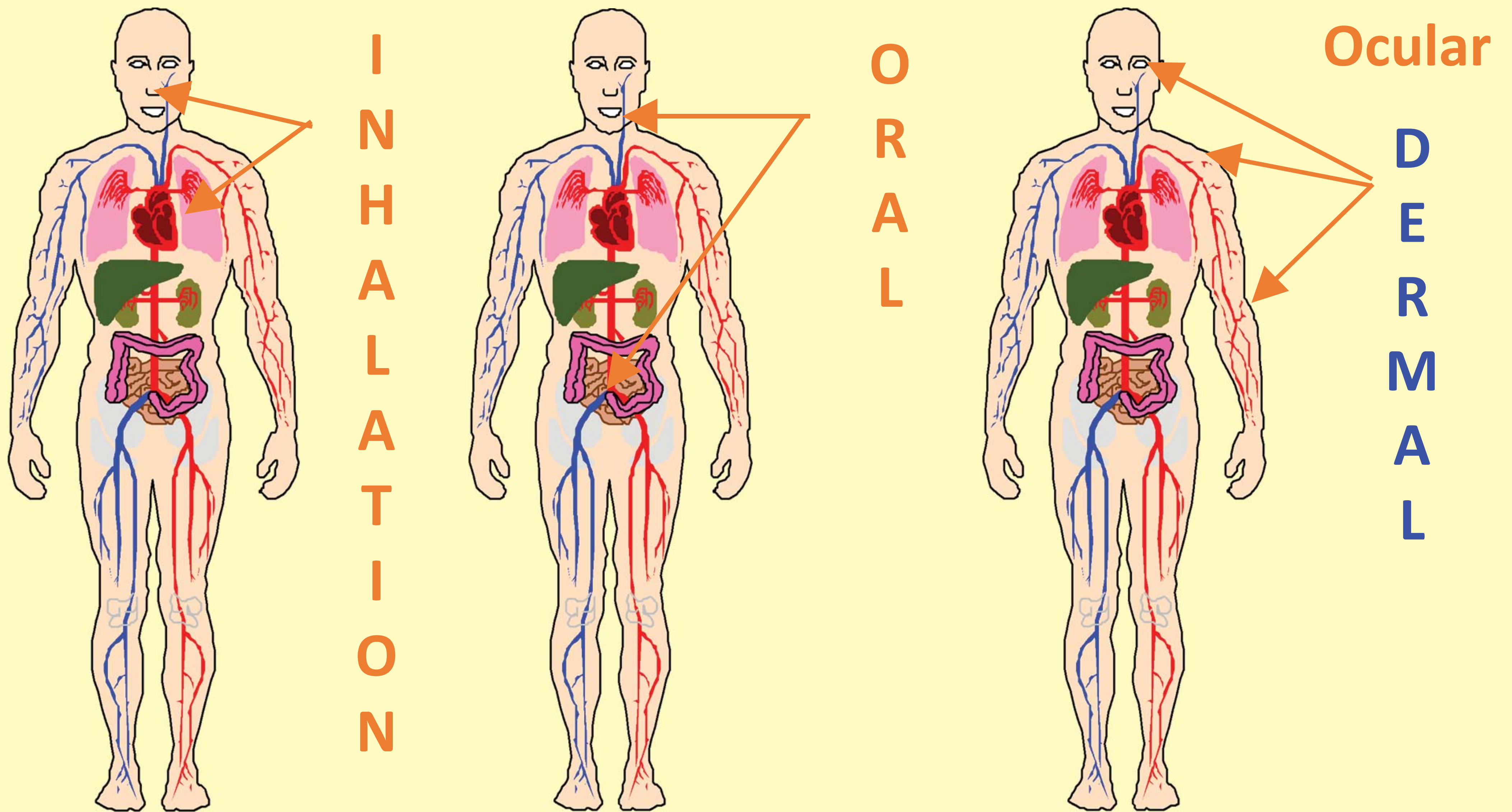




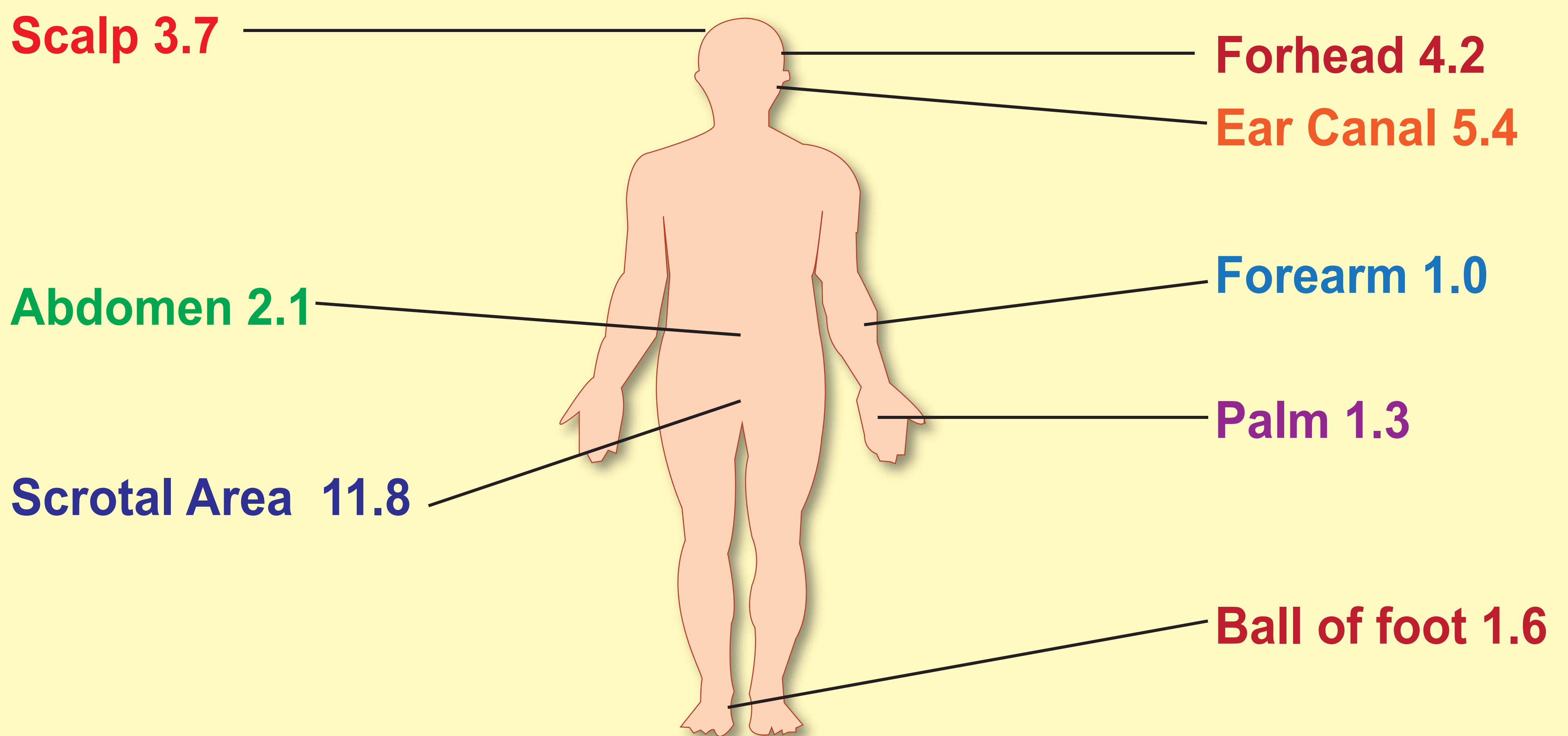
# FEED THE FUTURE

The U.S. Government's Global Hunger & Food Security Initiative

## Understanding Pesticide Exposure Routes



## Skin Exposure



Rates of pesticide exposure through the skin



**USAID**  
FROM THE AMERICAN PEOPLE



**CIMMYT**  
International Maize and Wheat Improvement Center

**VT VIRGINIA TECH**



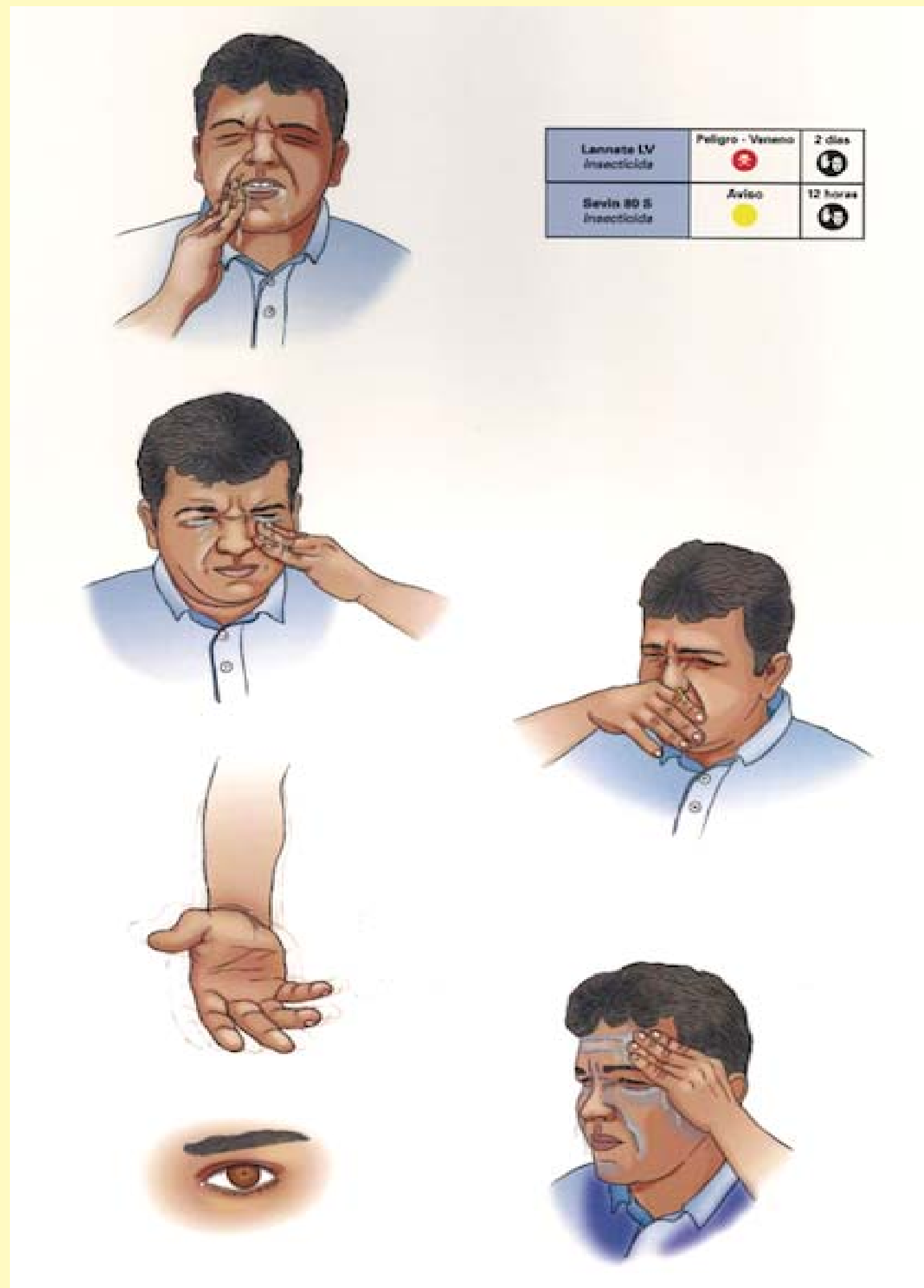


# FEED THE FUTURE

The U.S. Government's Global Hunger & Food Security Initiative

## Pesticide Residues Can Cause Illness

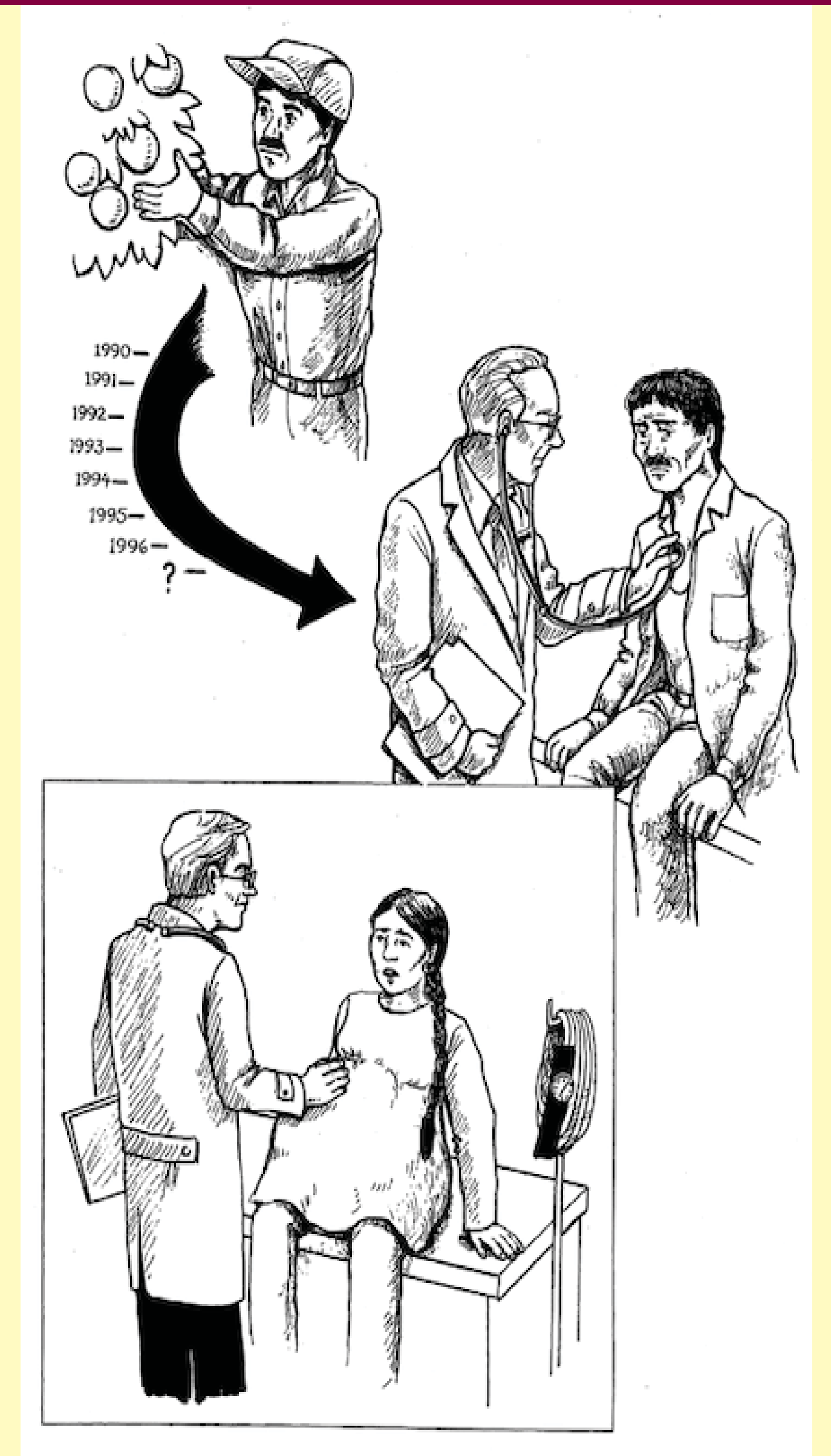
S  
Y  
M  
P  
T  
O  
M  
S  
O  
F



A  
C  
U  
T  
E  
E  
X  
P  
O  
S  
U  
R

## Pesticide Residues Can Cause Illness

- ◆ More concerning are **CHRONIC** effects:
  - **Cancer**
  - **Mutations**
  - **Endocrine disruption**
  - **Reproductive effects**
  - **Neurological effects**
- ◆ **This is a long-term national health crisis.**



**USAID**  
FROM THE AMERICAN PEOPLE



**CIMMYT**  
International Maize and Wheat Improvement Center

**VT VIRGINIA TECH**