

Bio Control Research Laboratories

R&D division of Pest Control (India) Pvt Ltd



Working in Collaboration with Nature

Pheromone Traps and Lures



Working in Collaboration with Nature

PCITM
SINCE 1954

Management Cocoa Pod Borer by mass trapping in Indonesia

- Collaborative project with Mars Inc., USA; USDA; NRI, UK; ICCR, Indonesia and GTZ to develop
 - Pheromone based mass trapping *Conopomorpha cramerella*
 - Stand alone method of managing Cocoa Pod Borer
 - Pesticide use can be avoided by installing 8 traps/ ha



Management of Coffee White Stem Borer

Demonstrated over 4000 acres by CCRI with BCRL lures & traps under ICO/ CFC/ Coffee Board Project coordinated by CABI

	Winter 04	Winter 05	Winter 06
Exit Holes (Old+New)	1116	560	190
Traps	400	311	311
Adults caught	508	206	206
% Trapped	44.20	37.45	108

- Data courtesy Dr. P. K. Vinod Kumar, CCRI



90% of adults unmated

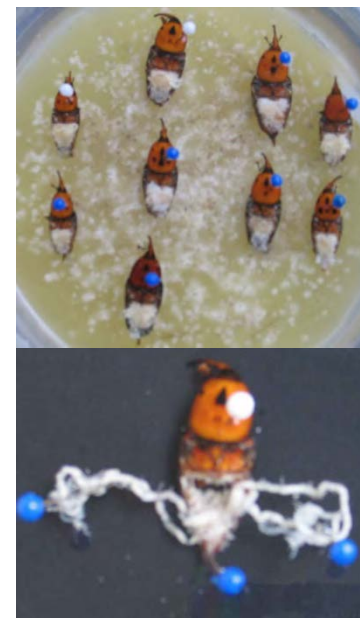


Area wide (400 acres) mass trapping of RPW & RB under Coconut Development Board Project

	Female	Male	Total	% Fem
RPW	17836	10079	27915	63.89
RB	8629	4144	12773	67.56



Reproductive Status	RPW		RB	
	No	%	No	%
Virgin	130	50.88	110	54.13
Gravid	73	27.50	73	33.88
Laying	42	16.13	26	11.50
Spent	15	5.50	1	0.50
Total	260	100	210	100



COCONUT DEVELOPMENT BOARD PROJECT

Synthesis of Coconut black headed caterpillar pheromone

Can be used for surveillance and pest monitoring
Releases of parasitoids coinciding with larval stage



Mass trapping of TLM



Mass trapping of Pink bollworm



Mass trapping of EFSB



Masstrapping of DBM



Mass trapping of *Helicoverpa armigera*





----- THANK YOU -----

